

32.00 mm

165.00 mm

GERI CARE®  
Lidocaine 4% Patch

GERI CARE® CHILD-RESISTANT PACKAGING  
NDC 57896-161-06

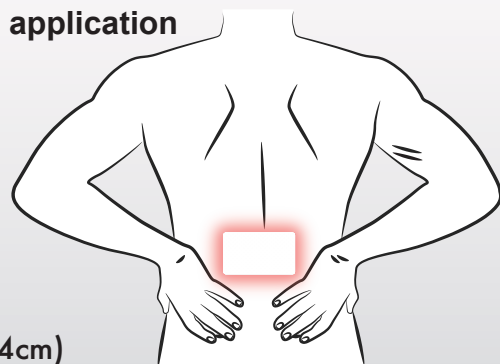
Compare to the active ingredient in Salonpas®  
Maximum Strength Lidocaine Patch.\*\*

# LIDOCAINE PAIN RELIEF PATCH

Lidocaine 4% Topical Anesthetic

Temporarily relieves pain

- Stay-put flexible patch
- Easy to apply and remove
- No-mess, single-use application
- Odor Free



6 Patches  
3.93 X 5.51 IN (10cm X 14cm)

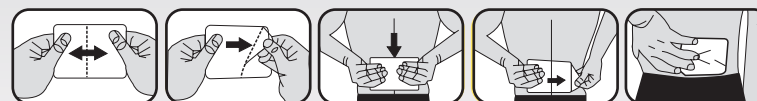
**MAXIMUM STRENGTH\***

\*Lidocaine 4% is the maximum concentration available without a prescription.

125.00 mm

GERI CARE®

LIDOCAINE PAIN RELIEF PATCH  
Lidocaine 4% • Topical Anesthetic



Pull apart Peel off one side of the film Place on affected area Peel off the remaining film Press patch thoroughly

Tamper Evident: Do not use if pouch is damaged or opened.

**Drug Facts**  
**Active ingredient** ..... **Purpose**  
 Lidocaine 4.0%..... Topical anesthetic

**Use** Temporarily relieves minor pain.

**Warnings**

For external use only

- Do not use ■ More than one patch on your body at a time ■ On cut, irritated or swollen skin
- On puncture wounds ■ For more than one week without consulting a doctor
- If you are allergic to any active or inactive ingredients

**When using this product** ■ Use only as directed

- Read and follow all directions and warnings on this carton ■ Do not allow contact with the eyes
- Do not use at the same time as other topical analgesics ■ Do not microwave
- Do not bandage tightly or apply local heat (such as heating pads) to the area of use
- Dispose of used patch in manner that always keeps product away from children and pets. Used patches still contain the drug product that can produce serious adverse effects if a child or pet chews or ingests this patch.

**Stop use and consult a doctor if** ■ Condition worsens ■ Redness is present ■ Irritation develops

■ Symptoms persist for more than 7 days or clear up and occur again within a few days ■ You experience signs of skin injury, such as pain, swelling or blistering where the product was applied.  
**If pregnant or breastfeeding**, ask a health professional before use.

**Keep out of reach of children and pets.** If swallowed, get medical help or contact a Poison Control Center 1-800-222-1222 right away.

**Directions**  
**Adults and children 12 years of age and over:** Clean and dry affected area. Carefully remove backing from patch (see illustration). Apply sticky side of patch to affected area. Use one patch for up to 12 hours. Discard patch after single use.  
**Children under 12 years of age:** consult a physician.

**Other information**  
■ Store at room temperature ■ Avoid direct sunlight ■ Protect from excessive moisture

**Inactive ingredients**  
aluminum glycinat, benzyl alcohol, butylated hydroxyanisole, carboxymethylcellulose sodium, edetate disodium, ethylhexylglycerin, glycerin, kaolin, methacrylate copolymer, oleic acid, phenoxyethanol, polyacrylic acid, polysorbate 80, polyvinyl alcohol, propylene glycol, PVP, sodium polyacrylate, sorbitol, tartaric acid, titanium dioxide, water

**Questions or comments:** Call 1-800-540-3765

\*\*This product is not manufactured or distributed by the owner of the registered trademark Salonpas®.

Distributed by: GERI-CARE PHARMACEUTICALS CORP.  
1295 Towbin Ave  
Lakewood, NJ 08701  
Made in India



REV 1125

15 x 35 mm  
NVZ Area

GERI CARE®

LIDOCAINE PAIN RELIEF PATCH  
Lidocaine 4% • Topical Anesthetic